



INTERCONTINENTAL CHICAGO HOTEL

*505 N. Michigan Avenue
Chicago, IL 60611
312-944-4100*



About The Property

Today, the InterContinental Chicago Magnificent Mile is a world-renowned destination hotel that embraces contemporary traveler's tastes while proudly acknowledging our own rich past.

*Built in 1929,
InterContinental
Chicago is a registered
Historic Hotel of
America*

*Our property is the
only hotel with a
front entrance onto
Magnificent Mile*

*Our iconic address
showcases two towers -
the Executive Tower
to the South and
the Grand Tower
to the North.*

*On Magnificent Mile,
we are the closest hotel
to the Chicago River
at .2 miles away*

*792 Guestrooms,
72 Suites,
2 Townhouse-Style
Specialty Suites*

*Constructed during
the prohibition era,
our building contains
secret panels where
liquor was stored
in the 1920s*



Spa InterContinental

Spa InterContinental is our three-level, on-site wellness facility featuring Chicago's oldest & historic junior Olympic swimming pool, a free weights station, cardio and cable machines, three spa treatment rooms and Finish hot saunas.



“At the time it was built, the 14th floor pool at was considered both a landmark and an engineering marvel.”

Food & Beverage

From coffee to fine wine, our four different on-site food and beverage outlets boast diverse menus that will please any palette. Savor the best dining options during your stay at InterContinental Chicago.

Michael Jordan's Steak House

Prime, dry-aged, hand-cut beef that's worthy of its namesake, Michael Jordan's Steak House serves succulent meals with the best locally sourced, seasonal ingredients.

ENO Wine Room

ENO is a stylish, chic wine room with a relaxed atmosphere that channels the feel of an intimate wine cellar. Floor-to-ceiling wine racks surround you as you taste wine, chocolate, and cheese from across the world.

Starbucks

Open early, the Starbucks in our main lobby allows you to purchase your favorite drinks and treats to fuel you throughout your day.

Center Court

Wake up to the best breakfast on the Magnificent Mile. Center Court serves classic dishes, chefs' own special creations and a breakfast buffet with a plethora of options.





Meetings & Events

Meetings at InterContinental Chicago Hotel are always timeless. Our wide array of venues allow you to host both large conferences and smaller breakouts.



“With over 40,000 sq. ft. of meeting venues options, the InterContinental Chicago is the classic settings for historic meetings and event.”

Conference Spaces

King Arthur Court - 3,800 sq. ft.

A historic gem, King Arthur Court lends a regal feel to any event. High ceilings and natural lighting decorate the original chandeliers, murals, and wood carvings.

Renaissance Ballroom - 4,300 sq. ft.

Featuring ornate French design, recalling the era of Louis XVI, this is our second largest ballroom and showcases natural lighting, views up and down Magnificent Mile, crystal chandeliers and ornate wood carvings.

Avenue & Streeterville - 8,500 sq. ft.

The Avenue & Streeterville Ballrooms on our lobby level can be separated or contracted together. Combined they make an ideal space for hosting a fully contained meeting to one floor.

Grand Ballroom - 8,600 sq. ft.

The crown jewel of our event venues, the Grand Ballroom features an iconic elliptical shape. The space includes the Grand Balcony, overlooking the ballroom. A Baccarat Crystal chandelier, one of the largest in the world, hangs over the ballroom.

Empire Room - 3,800 sq. ft.

Empire Room can host up to 400 people. Fabulous natural lighting showcases a view of Magnificent Mile.

Camelot Room - 3,400 sq. ft.

Camelot features high ceilings with wood beams and marble accents. Windows at the south end send in natural lighting, and the room has a private washrooms.

Toledo Room - 1,900 sq. ft.

Spanish-designed room with carved wood doors and bright décor, located beside Spanish Court, an elegant foyer with a water fountain, Spanish tiles, and ornate iron fixtures.

Exchange - 2,500 sq. ft.

Converted from a former basketball court, Exchange has a modern feel with high ceilings. Private restrooms lie just outside a foyer area.

BREAKOUT ROOMS

- *Alhambra Room*
- *Cordova Room*
- *Ohio, St. Clair, Illinois & Michigan Room*
- *Holabird, Sullivan & Wright Rooms*
- *Burnham & Trade Rooms*
- *Root Room*
- *Tower Lounge*



Grand Tower

About:

Our Grand Tower, built in 1961, was renovated in 2013 and draws inspiration from the warm, vibrant colors of Magnificent Mile and iconic fashion statements.

By The Numbers:

- 26 stories (sleeping floors 3 - 26)
- 182 King Guestrooms, 300 sq. ft.
- 246 Two Bed Guestrooms, 300 sq. ft.
- 49 Suites with Living Room, 600 sq. ft.

Fun Fact:

These floral throw pillows in the Grand Tower are designed to be reminiscent of the iconic tulips that line the streets of Magnificent Mile every spring.

Executive Tower

About:

The Executive Tower was originally built in 1929 and was recently renovated in 2015. The design inspiration showcases a neutral palette of warm greys and blacks, a reflection of Chicago architecture, and pops of blue to represent Lake Michigan and the Chicago River

By The Numbers:

- 42 stories (sleeping floors 9 - 42)
- 231 King Guestrooms, 375 square feet
- 59 Two Bed Guestrooms, 300 sq. ft.
- 23 Suites with Living Room, 600 sq. ft.
- Presidential Suite, 1,500+ sq. ft.
- Royal Suite, 1,200+ sq. ft.





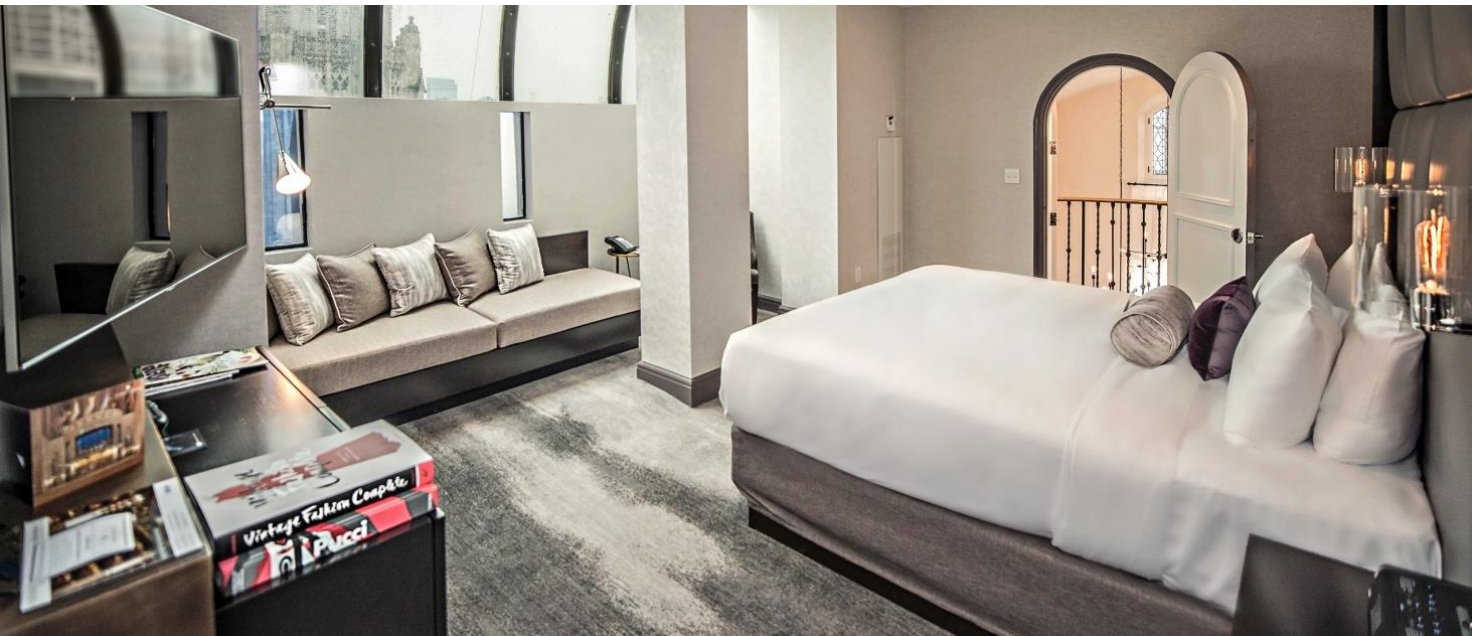
Royal Suite

About:

The Royal Suite at the InterContinental Chicago features custom designed lighting, modern furnishings and styled with bright interiors and hints of vibrant color.

Specifications:

- 1,200 sq. ft., Townhouse-style Layout
- 2nd Story King-sized Master Bed & En Suite Bath
- Ground Level Second King-sized Bed & En Suite Bath
- Entryway Powder Room
- Dining Area Seats 6 Guests
- Living Room with Apple TV



Fun Fact:

The Royal Suite, although it's smaller size, is actually two stories above the Presidential Suite - due to the fact that the property was built on a tiered scale.



Presidential Suite

About:

Take in spectacular views of the Chicago River, historic Chicago Tribune Tower and the Wrigley Building from our newly renovated Presidential Suite.

Specifications:

- 1,700 sq. ft., Townhouse-style Layout
- 2nd Story King-sized Master Bed & En Suite Bath
- Entryway Powder Room
- Media Lounge with Jawbone Big Jambox Wireless Bluetooth Speakers and Large Flat Screen HDTV
- Dining Room Seats 8 Guests
- Living Room with Apple TV & Bose Sound
- Fully-Stocked, Residential-style Kitchen

Fun Fact:

When the Presidential Suite was renovated in 2015, designers kept the handrails and door architecture untouched so they are all still original to 1929.



Presidential Suite

In-Room Amenities

- *300-thread Count Bed Linens*
- *Pillow-Top King Serta Mattress*
- *Goose-Down Bedding From Pacific Coast Feather Company*
- *4-Piece Bath with Italian Marble Vanity & Walk-in Shower*
- *Complimentary Daily Bottled Water*
- *Keurig K-Classic Single Serve Machine*
- *Coffee Bar with 5 Brew Pods (Regular, Decaf and Herbal Tea)*
- *24/7 Room Service*
- *Fully-Stocked Premium Mini-Bar*
- *Blackout Curtains and Shears*
- *Complimentary High-speed Wifi*
- *Ihome Phone Dock and Speaker*
- *Flat-screen HDTV with 40+ Channels & HBO Access*
- *Writing Desk with Ergonomic Chair and Tabletop Outlets*
- *Complimentary Agraria Home™ Bath Products*
- *Plush Terry-cloth Robe and Hairdryer*
- *Iron, Ironing Board and Safe*





INTERCONTINENTAL®
CHICAGO MAGNIFICENT MILE